

Franklins
Jared Schumacher
021714450
jared@franklins.co.nz

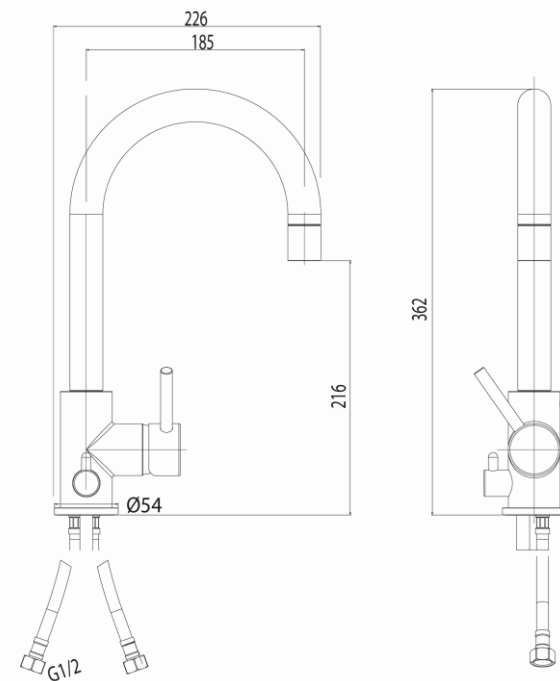
FRANKLIN
DESIGNSTUDIO

Kenepuru Landing
101 Homes Ltd
QUOT288706

FRANKLIN
DESIGNSTUDIO

M&ZDRB14122
M&Z Ditirambo High Rise Sink Mixer

Designed and manufactured in Italy

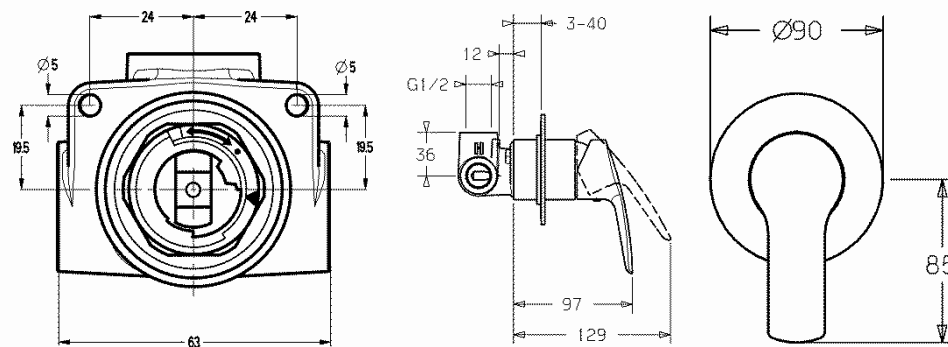


M&Z
RUBINETTERIE

FRANKLIN
DESIGNSTUDIO

HP5062 9073 KIT
Hansa Polo Shower Mixer Round 90mm
KIT

Designed and manufactured in Germany

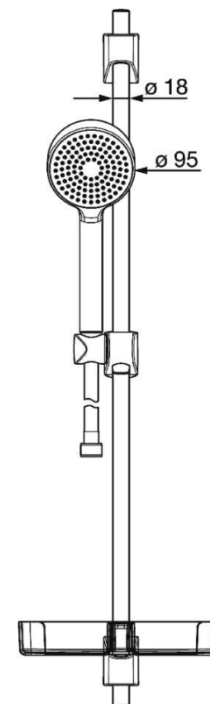


 **HANSA**

FRANKLIN
DESIGNSTUDIO

HE4478 0133
Hansa Basic Jet Slide Shower 3 Function

Designed and manufactured in Germany



 **HANSA**

FRANKLIN
DESIGNSTUDIO

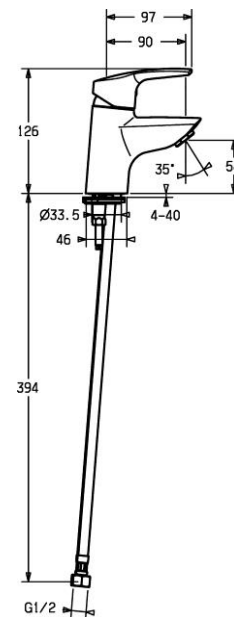
1m x 1m Acrylic Shower
Similar to picture shown



FRANKLIN
DESIGNSTUDIO

HP5142 2273 0037
Hansa Polo Basin Faucet

Designed and manufactured in Germany



 **HANSA**

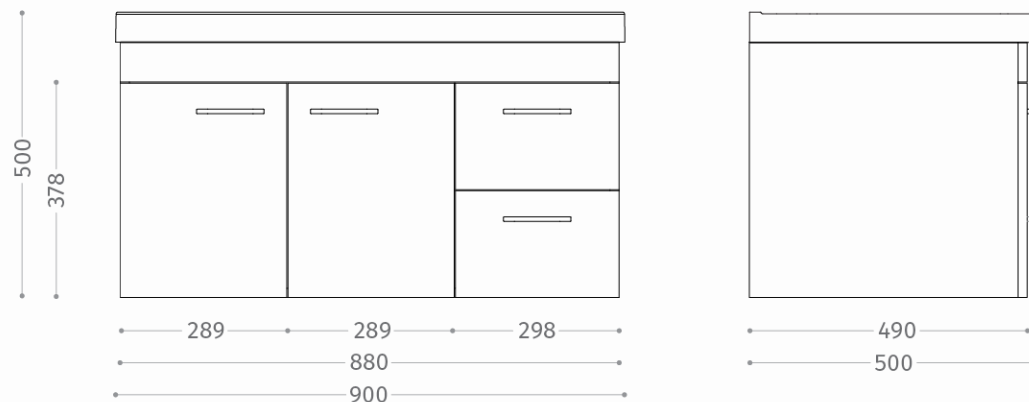
FRANKLIN
DESIGNSTUDIO

FV040.900MW Bella Wall Vanity 900 Melamine White

Vanity Cabinetry designed and manufactured in New Zealand



Top Designed and manufactured in Poland



FRANKLIN
DESIGNSTUDIO

marmorin
DESIGN

Hettich

Franklin Design Studio Vanity – designed and manufactured in New Zealand.
Marmorin cast dolomitic marble basin – designed and manufactured in Poland
Double soft close drawers – with a lifetime warranty and manufactured by Hettich in Germany.

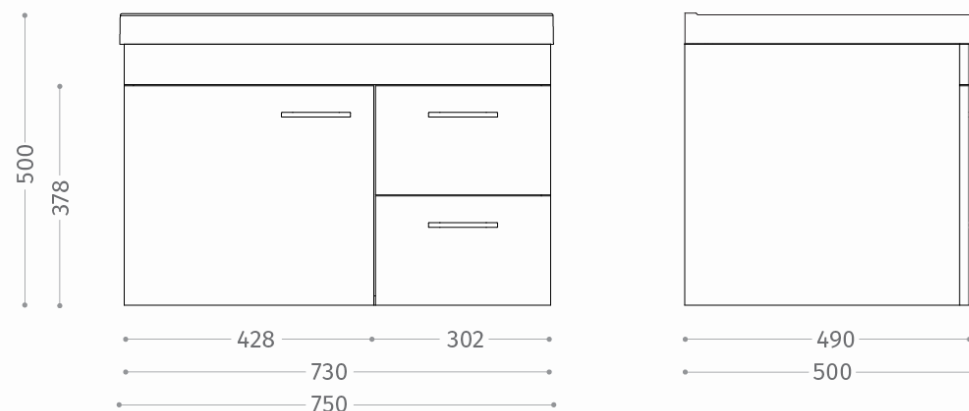
FRANKLIN
DESIGNSTUDIO

FV040.750MW
Bella Wall Vanity 750 1Dr 2Dwr Mel White

Vanity Cabinetry designed and manufactured in New Zealand



Top Designed and manufactured in Poland



FRANKLIN
DESIGNSTUDIO

marmorin
DESIGN

Hettich

Franklin Design Studio Vanity – designed and manufactured in New Zealand.
Marmorin cast dolomitic marble basin – designed and manufactured in Poland.
Double soft close drawers – with a lifetime warranty and manufactured by Hettich in Germany.

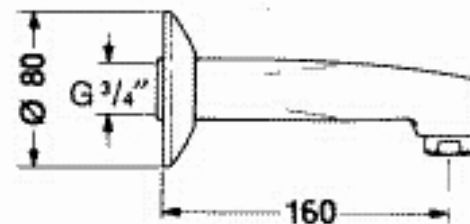
FRANKLIN
DESIGNSTUDIO

HS598

Hansa Twist Bath Spout

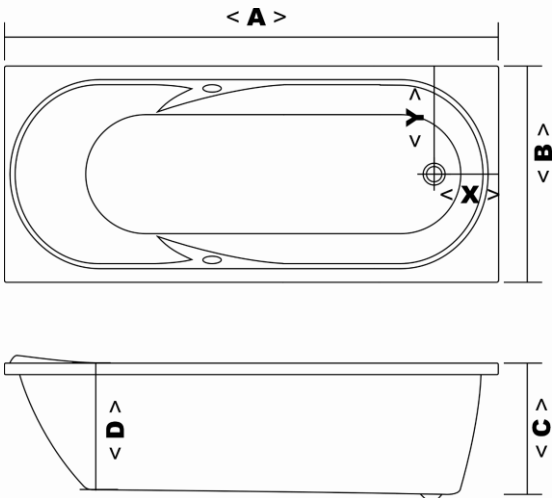
160mmx20mmCP

Designed and manufactured in Germany



 **HANSA**

NSB-1675
Jameston Standard Bath 1675x750



STANDARD BATH				(DIAGRAM 2)			
Model	Ref	A	B	C	D	Waste X	Waste Y
1675	NSB-1675	1675	750	440	445	215	375

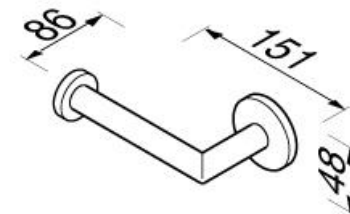


Jameston

- *Sculptured back rest and integral arm supports.
- *Four sided 10mm rolled upstand for maximum water tightness.
- *Manufactured from sanitary acrylic.

GN6509-02
Geesa Nemox Toilet Roll Holder (Uncovered)

Designed and manufactured in Netherlands



- Features –
- Minimalistic design (contemporary)
 - Finish: Chrome
 - Concealed fixing



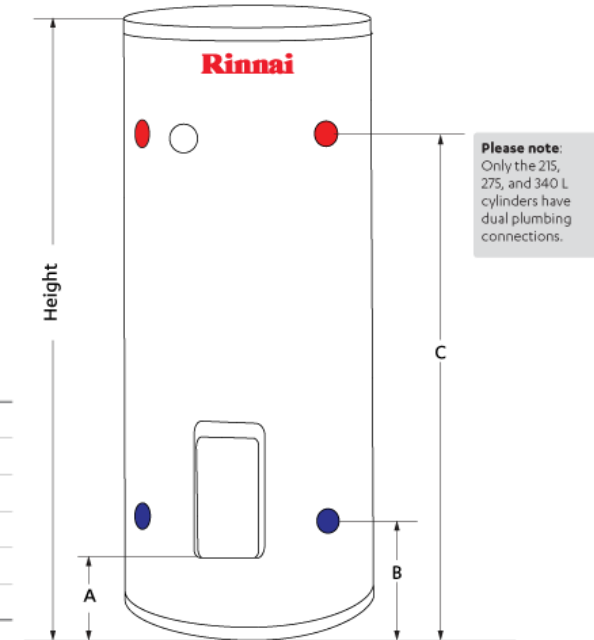
*Produced in Amersfoort with 12 years guarantee
*Geesa is certified according to ISO 9001-2008

ME180488E30
180 Litre MP Enamel Indoor/Outdoor
Cylinder 488x1790H 3kW



Model	Diam.(mm)	Height (mm)	A (mm)	B (mm)	C (mm)
90 L	Ø 488	995	160	215	765
135 L	Ø 488	1395	160	215	1165
180 L	Ø 488	1790	160	215	1560
215 L	Ø 515	1825	160	215	1590
275 L	Ø 685	1265	160	215	940
340 L	Ø 685	1510	160	215	1185

Dimensions (mm)



90 L: Empty - 44 kg, full - 134 kg
135 L: Empty - 56 kg, full - 191 kg
180 L: Empty - 71 kg, full - 251 kg
215 L: Empty - 83 kg, full - 298 kg
275 L: Empty - 87 kg, full - 364 kg
340 L: Empty - 101 kg, full - 441 kg

Rinnai

Suitable for:

- Indoor and outdoor installations
- Mains and low pressure systems
- Residential and commercial water heating applications
- Right hand plumbing connections (90, 135, 180 L)
- Left or right hand plumbing connections (215, 275, 340 L)

The larger cylinders (215, 275, 340 L) can be connected to hot water heat pump systems.